



Barracuda Microsoft Outlook Plugin Barracuda Spam Firewall

These are instructions to help understand and implement the Barracuda Microsoft Outlook Plugin for the Windows environment available for the Barracuda Spam Firewall. If you have any questions after reading this document, please call us at 408-342-5400 or email us at support@barracudanetworks.com.

What is the Barracuda Microsoft Outlook Plugin?

The Barracuda Microsoft Outlook Plugin is a plugin for the Barracuda Spam Firewall for use with Windows versions of Microsoft Outlook. It is compatible with Windows 98/2000/NT/XP/Vista, and Outlook versions up to and including Outlook 2003. The plugin allows a user to classify messages as “Spam” or “Not Spam” right from their desktop. This classification helps train the user’s personal Bayesian database, and results in higher accuracy for the Barracuda Spam Firewall.

The plugin performs the same functionality as classification from the Message Log, except all feedback is stored in a per-user Bayesian database on the system. This mechanism prevents users from compromising the global Bayesian database, and results more specific scoring due to learning about a user’s personal mail preferences.

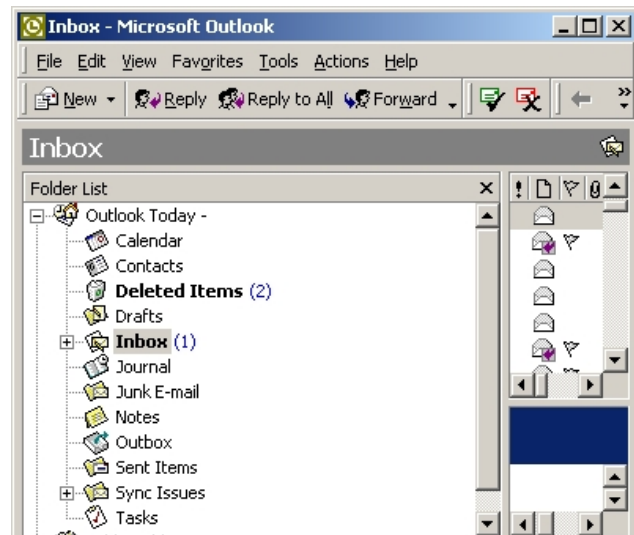
It is up to the Barracuda administrator to decide whether or not users should be given access to this plugin. If the admin wishes to provide the plugin, download capability can be activated for the users under the [BASIC->Bayesian/Intent](#) page. Users will then be able to download and install the plugin from a link on the login screen. If the admin chooses to only provide the plugin to a small subset of users, the plugin can be downloaded from the page where activation is performed and distributed to the necessary users.

Using the Plugin

Once installed, the plugin makes itself available to the user through the toolbar inside MS Outlook. Two icons are provided that perform the necessary classification functionality. A red envelope with an “X” in the lower right corner to classify messages as spam, and a green envelope with a checkmark to classify messages as not-spam.

To use the plugin, select one or more items from the message window and click on the “Spam” or “Not Spam” icon to submit the messages to the Barracuda Spam Firewall for classification.

For convenience, the toolbar icons are also provided when a mail message is opened in a new window for viewing. If desired, the message can be classified immediately from that window.



Please note that Bayesian learning is only effective when the differences between “Spam” and “Not Spam” are known to the system. Therefore it is important to make sure that **both types of messages are classified from user desktops**. This plugin is designed to make that classification process as easy as possible.

However, it is up to each user to make sure that the items they classify from the plugin are really considered spam or not spam, as it will affect the scoring of future messages coming onto the system for them.